

PEST OF SILKWORM

- Pest of silkworm
- 1. Uzi fly (*Tricholyga bombycis*)



Stage - Larva and pupae
Mulberry and tasar silkworm affected

<https://www.google.com/url?sa=i&url=https%3A%2F%2Fwww.facebook.com%2F281444612384983%2Fposts%2Fuzi-fly-tricholyga-bombycis-trioholyga-bombycial-a-diptersn-fly-of-the-family-ta%2F345928129269964%2F&psig=AOvVaw34n6gxqKE3197GCJS7pfl&ust=1667555169545000&source=images&cd=vfe&ved=0CA0QjRxqFwoTCMDViLTdkfsCFQAAAAAdAAAAABAN>

- ***Exorista bombycis***
- Endo- larval parasitoid of the silkworm.
- August – November
- Presence of black scar on the body of parasitized
- Silkworm and maggot emerge hole in cocoon indicate uzi infection. Uzi maggots emerges by piercing thus rpmaking cocoon unfit for commercial reeling.

- **Physical method**
- Collection and destruction of infected pupae worm .
- Rearing floor free from cracks & crevices.
- Fixing wire mesh or nylon mesh to the window
- **Chemical method(Uzi powder)**
Dusted on the body of silkworm 2nd day during III rd instar, 2 nd & 4 th day during 4 instar. 2nd, 4 th and 6 th day in 5 instar.

- Uzi trap
- Chemo trap – 1 tab. in 1lit of water. This poured in light coloured flat trays.
- Uzicide – sprayed after bed cleaning or 23 hrs after feeding.
- Biological Agent – **Nesolynx thymus** is an ecto-pupal parasitoid to kill the pupae.



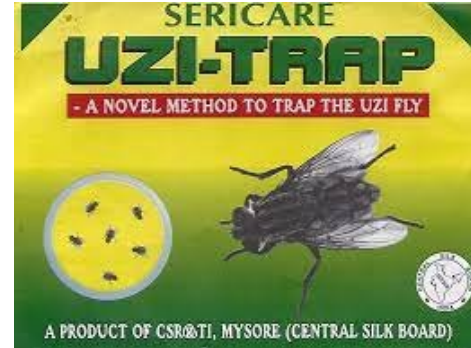
Dermestid beetle
Larve bore inside
the cocoon

https://www.google.com/url?sa=i&url=https%3A%2F%2Fentnemdept.ufl.edu%2Fcreatures%2Fmisc%2Fbeetles%2Fhide_beetle.htm&psig=AOvVaw0etvV4pHuP8x456Ksr0H1r&ust=1667555966731000&source=images&cd=vfe&ved=0CA0QjRxqFwoTCLDBv67gkfsCFQAAAAAdAAAAABAI

- 2. Insect pest grainages
- Dermestid beetles & earwing cause heavy loss in grainages.
- Larve bore inside the cocoon and eat the pupa.
- Dermatid bettle omnivorous.
- Feed on egg & silk moth, feed on pupae within cocoons.
- Feed on dead organic matter.



https://www.google.com/url?sa=i&url=http%3A%2F%2Fwww.csrtimys.res.in%2Fsites%2Fdefault%2Ffiles%2Fphamplets%2Fen-46.pdf&psig=AOvVaw35TEray3luQYLx2IrfvBOv&ust=1667555591647000&source=images&cd=vfe&ved=0CA0QjRxxqFwoTCMCct_vekfsCFQAAAAAdAAAAABAJ

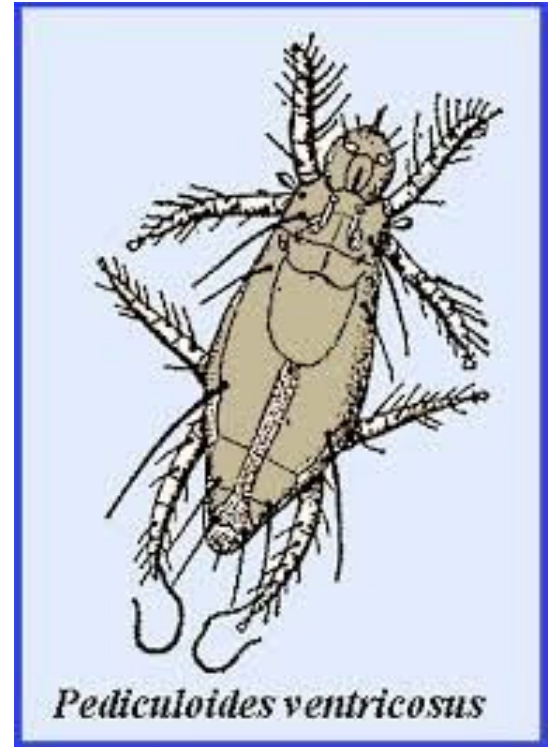


https://www.google.com/url?sa=i&url=http%3A%2F%2Fwww.csrtimys.res.in%2Fsites%2Fdefault%2Ffiles%2Fmenufiles%2Fforewarning-uzifly.pdf&psig=AOvVaw35TEray3luQYLx2IrfvBOv&ust=1667555591647000&source=images&cd=vfe&ved=0CA0QjRxxqFwoTCMCct_vekfsCFQAAAAAdAAAAABAO

- *Labia arachidis* (Earwing)



https://www.google.com/url?sa=i&url=https%3A%2F%2Fbase.com%2Ftmurray74%2Fearwigs_dermaptera&psig=AOvVaw3QhjecfVFztjbjQw9D_eeT&ust=1667556325859000&source=images&cd=vfe&ved=0CA0QjRxqFwoTCMDQx9nhkfsCFQAAAAAdAAAAABAN



Pediculoides ventricosus

<https://www.google.com/url?sa=i&url=http%3A%2F%2Fwww.faculty.ucr.edu%2F~legnerref%2Fmedical%2Ftarsonemoidea.htm&psig=AOvVaw1aDkinOYZidldgB6K-nEU2&ust=1667556579723000&source=images&cd=vfe&ved=0CA0QjRxqFwoTCIDx2tPikfsCFQAAAAAdAAAAABAE>

- Cut open the abdominal region of the moth
- Injured moth die before egg laying.
- Management
- The grainage premises & place of storage of cocoon should kept clean.
- **Chemical control**
- Dusting of bleaching powder
- The cocoon bags 0.028 % of deltamethrin solution.
- Spray 0.028 % of deltamethrin solution on floor & wall of PC storage rooms.

- Dust 5 % malathion on pc before sorting them.
- 0.076% DDVP solution.
- Mites
- *Pediculoides ventricosus*
- **Pest control**
- Sprinkle 1 layes of bleaching powder (calcium chloride) around rearing house.

THANK YOU